

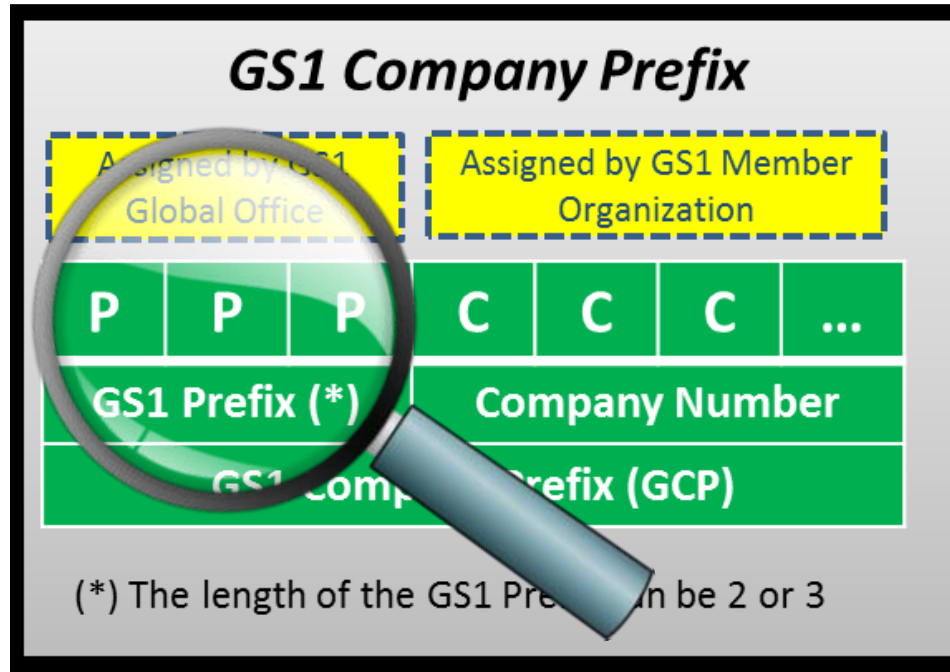
Introduction into Printing Barcodes

5 Steps to Your Barcode

Niklas Kuhnert, Consultant, GS1 Germany
2021-07-19



Step 1: Get a GS1 Company Prefix



Step 1: The GS1 Prefix



- **000-139:** **USA and Canada**
- **300-379:** **France**
- **400-440:** **Germany**
- **500-509:** **Great Britain**
- **540-549:** **Belgium, Luxembourg**
- **560:** **Portugal**
- **600-601:** **South Africa**
- **603:** **Ghana**
- **604:** **Senegal**
- **615:** **Nigeria**
- **616:** **Kenya**
- **618:** **Côte d'Ivoire**
- **...**

Step 1: Length of the GS1 Company Prefix



Globale Trade Item Number (GTIN)		
GS1 Company Prefix (GCP)	Individual Part of the Number	Check Digit
4 0 1 2 3 4 5	0 0 0 0 1	6
4 2 1 2 3 4 5 6	0 0 0 1	8
4 3 1 2 3 4 5 6 7	0 0 1	1

Step 1: Length of the Individual Part



Colour



Size

S

M

L

XL

Combination (GTINs)

36

Step 2: Assign Numbers



Company Number

Check Digit

GS1 Prefix

Individual Part

4 0 1

2 3 4 5

0 0 0 0 1

6



Step 2: Assign Numbers



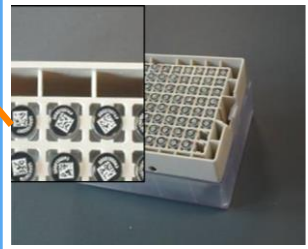
Company Number					Check Digit							
GS1 Prefix			Individual Part									
4	0	1	2	3	4	5	0	0	0	0	1	6
4	0	1	2	3	4	5	0	0	0	0	2	3
							
4	0	1	2	3	4	5	9	9	9	9	9	0

Step 3: Select a Barcode



The GS1 Barcodes

GS1 EAN/UPC Family				GS1 2D Barcodes	
<p>UPC-A</p> <p>(01) 1 141 00003 6</p>	<p>EAN-13</p> <p>9 501101 530003</p>	<p>UPC-E</p> <p>0 614193 9</p>	<p>EAN-8</p> <p>9505 0003</p>	<p>GS1 DataMatrix</p> <p>(01) 0 9501101 53000 3 (17) 150119 (10) AB-123</p>	<p>GS1 QR Code</p> <p>(01) 0 9501101 53000 3 (8200) http://example.com</p>
GS1 DataBar Family					
<p>Omnidirectional</p> <p>(01) 0 9501101 53000 3</p>	<p>Expanded</p> <p>(01) 0 9501101 53000 3 (17) 140704</p>	<p>Truncated</p> <p>(01) 0 9501101 53000 3</p>	<p>Limited</p> <p>(01) 0 9501101 53000 3</p>	<p>Stacked</p> <p>(01) 0 9501101 53000 3</p>	<p>Expanded Stacked</p> <p>(01) 0 950 101 53000 3 (3103) 00480</p>
GS1 1D Symbols used in General Distribution and Logistics but not at retail POS					
<p>GS1-128</p> <p>(01) 1 9501101 53000 0 (17) 140704 (10) AB-123</p>			<p>ITF-14</p> <p>19501101530000</p>		



Step 4: Pick a Barcode Size



Example: UPC Symbol Sizes



Minimum X-dimension 0.264
mm ; 0.0104"

Target X-dimension 0.330
mm ; 0.0130"

Maximum X-dimension
0.660 mm ; 0.0260"

Minimum symbol height
18.28 mm ; 0.720"

Minimum symbol height
22.85 mm ; 0.900"

Minimum symbol height
45.70 mm ; 1.800"



Step 5: Format the Barcode Text





GS1 Prefix: 401

Company No.: 98765

Item No.: 0099

Check Digit: ?

<https://www.gs1.org/services/check-digit-calculator>

<https://barcode.tec-it.com/en/EAN13?data=978020137962>